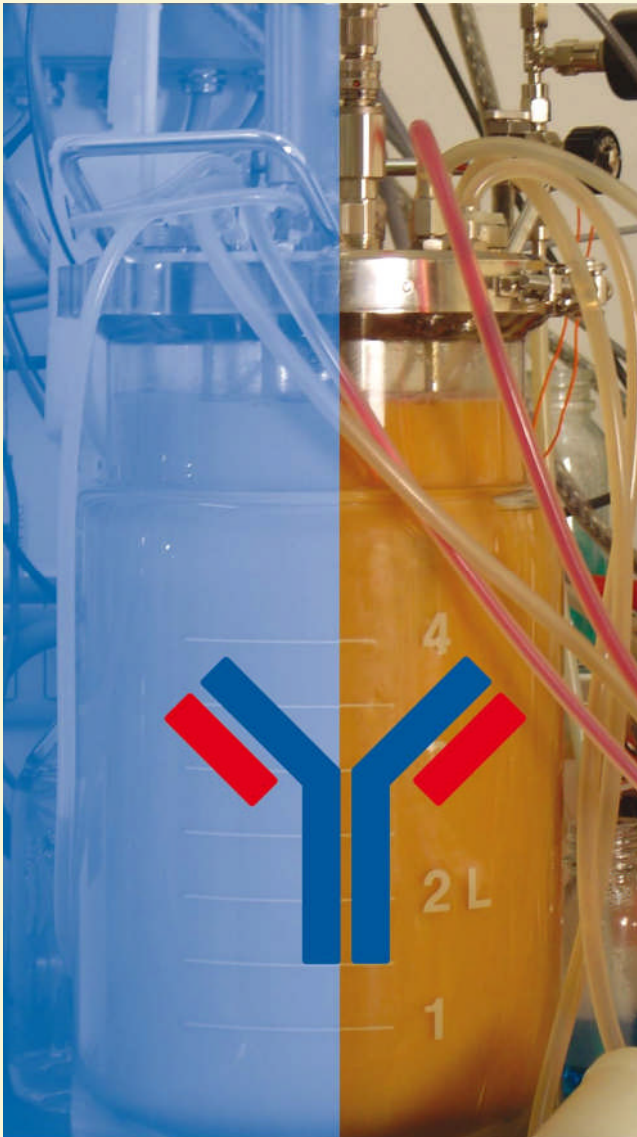


# Monoclonal Antibodies

Concentrates and Ready-to-use Reagents on the Basis of SIFIN Clones  
For Further Manufacturing Use (FFMU)



## Licences

1990: official licensing of our monoclonal blood grouping reagents as drugs

1993: license extensions by the Paul-Ehrlich-Institut (PEI)

2003: additional examinations by notified body 0483 for Annex II List A IVDD products

## Certified quality management system for design, manufacture and final control

DIN EN ISO 13485:2003

DIN EN ISO 9001:2000-12

Quality System and EC Design Examination acc. to Council Directive 98/79/EC – notified body 0483

FDA registered manufacturing facility No. 9085844

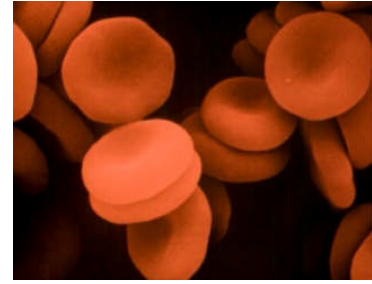
## Monoclonal antibodies have many advantages over polyclonal antibodies, including

- High avidity
- No contaminating antibodies
- Identification of weak antigens
- Excellent batch to batch reproducibility

## We have more than 40 years' experience as a manufacturer of blood grouping reagents

- 15 years' successful use of SIFIN MAbs in routine testing and manufacturing
- FFMU concentrates with extremely high mAb content

## Monoclonal Antibodies for Blood Grouping

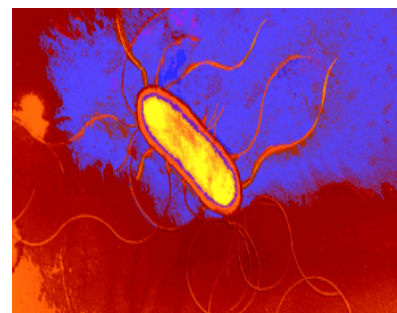


MAb	Clone	Properties	Isotype	Suitability			
				S	T	M	A
Anti-A	A-11H5	Reacts strongly with red cells of the blood groups A <sub>1</sub> , A <sub>2</sub> , A <sub>1</sub> B and A <sub>2</sub> B. Agglutinates A <sub>3</sub> red cells (mixed field agglutination), reaction with A <sub>x</sub> red cells usually positive.	IgM	•	•	•	•
Anti-A	A-5E10	Reacts strongly with red cells of the blood groups A <sub>1</sub> , A <sub>2</sub> , A <sub>1</sub> B and A <sub>2</sub> B. Agglutinates A <sub>3</sub> red cells (mixed field agglutination), reaction with A <sub>x</sub> red cells usually positive.	IgM	•	•	•	•
Anti-B	B-6F9	Reacts strongly with red cells of the blood groups B, A <sub>1</sub> B and A <sub>2</sub> B. Does not react with "acquired" B. Reacts with B <sub>x(european)</sub> cells and some oriental variant B cells.	IgM	•	•	•	•
Anti-B	B-2D7	Reacts strongly with red cells of the blood groups B, A <sub>1</sub> B and A <sub>2</sub> B. Does not react with "acquired" B. Reacts with some weak B variants and B <sub>x(european)</sub> .	IgM	•	•	•	•
Anti-D	BS 225 *	Reacts strongly with red cells with normally expressed antigen D. Agglutinates cells with weak D less strongly, occasionally not at all. From the most common categories, only category VI will not be agglutinated.	IgM	•	•		
Anti-M	11H2	Specifically agglutinates red cells with M antigen.	IgG <sub>1</sub>	•	•		
Anti-N	20H12	Specifically agglutinates red cells with N antigen after correction of pH to 8.6 - 8.9.	IgG <sub>2b</sub>	•	•		

**S** = slide test    **T** = tube test    **M** = micro titer plate    **A** = automated testing

\* licensed clone

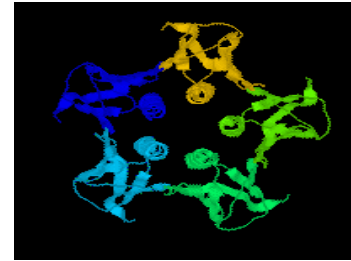
## Monoclonal Antibodies for Salmonella Serotyping



MAb	Clones	Properties	Isotype	Suitability
				S
Anti-Salmonella O-antigens	52 different clones	Each antibody reacts very strongly and highly specific with the according antigen. They are free from accompanying antibodies.	IgM or IgG	•
Anti-Salmonella H-antigens	20 different clones	Each antibody reacts very strongly and highly specific with the according antigen. They are free from accompanying antibodies.	IgG or IgM	•

**S** = slide test

## Monoclonal Antibodies for STEC- (VTEC-) Diagnosis



MAb	Clone	Properties	Isotype	Suitability	
				M	IB
Anti-Stx1	VT109/ 4-E9b	Reacts with subunit B of Shigatoxin. Neutralizes Stx1 Vero cell toxicity. Suited as capture and secondary detection antibody.	IgG <sub>1</sub>	•	•
Anti-Stx2	VT135/ 6-B9	Reacts with subunit A of Shigatoxin. Suited as secondary detection antibody.	IgG <sub>1</sub>	•	•
Anti-Stx2	VT136/ 8-H4	Reacts with subunit B of Shigatoxin. Neutralizes Stx2 Vero cell toxicity. Suited as capture and secondary detection antibody.	IgG <sub>1</sub>	•	•

**M** = micro titer plate      **IB** =Immunoblot

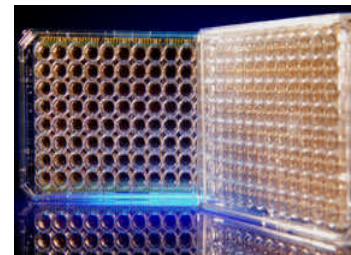
## Monoclonal Antibodies for Content-Determination of Mistletoe Lectins



MAb	Clone	Properties	Isotype	Suitability	
				M	
Anti-Mistletoe lectin (A-chain)	5F5	Reacts with native epitopes of mistletoe lectins I-III (A-chain). Suited as capture antibody for the determination of the total content of mistletoe lectins in mistletoe-extracts.	IgG <sub>1</sub>	•	
Anti-Mistletoe lectin (A-chain)	5H8	Reacts with native epitopes of mistletoe lectins I-III (A-chain). Suited as detection antibody for the determination of the total content of mistletoe lectins in mistletoe-extracts.	IgG <sub>1</sub>	•	

**M** = micro titer plate

## Monoclonal Antibody for EIA Production



MAb	Clone	Properties	Isotype	Suitability	
				M	
Anti-Human-IgM	11G4	Reacts specifically with $\mu$ -chains of native human IgM. No reaction with IgG, IgA and L-chains. Suited as ideal capture antibody for production of IgM EIA.	IgG <sub>1</sub>	•	

**M** = micro titer plate



For any information -  
please contact our Export Director Dr. Heinz Engel  
phone +49 30 92 70 30-83 • fax +49 30 92 70 30-30  
mail [engel@sifin.de](mailto:engel@sifin.de)

**SIFIN**